

UK Crematoria Survey 2016



Once again the Society has surveyed all the crematoria in the UK to obtain the latest information about fees, and to learn more about existing practices and facilities.

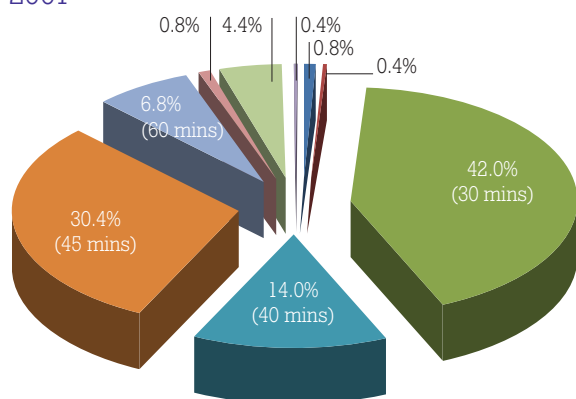
The latest situation is compared with the situation as it was in 2007, and for comparative purposes, where a subject was not covered in 2007 the earliest date for which information is available is shown.

The Society is extremely grateful for the information provided by crematoria and hopes it will be of interest in providing a picture of a continuing evolving cremation movement.

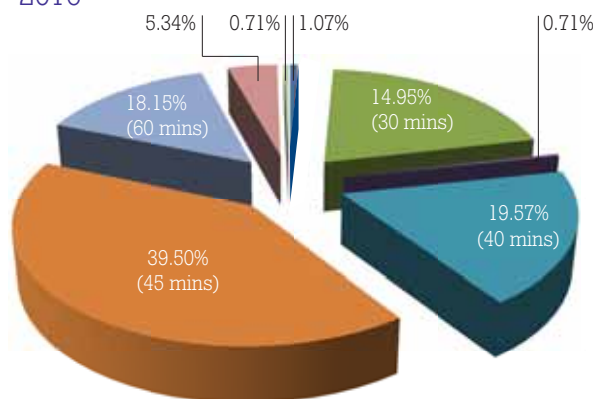
However, where no returns have been received the answers to the questions must be regarded as 'unknown' for the purposes of these stats, and this will have caused some anomalies in the graphs when comparing them with those of 2015.

Crematoria Booking Slots

2007



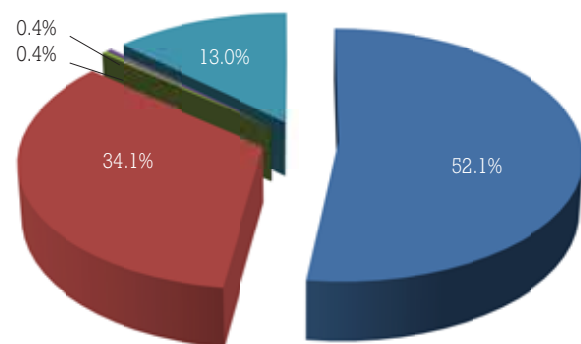
2016



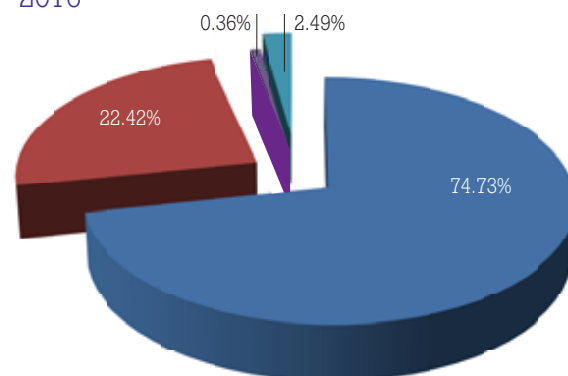
■ 20 mins ■ 25 mins ■ 30 mins ■ 35 mins ■ 40 mins ■ 45 mins ■ 60 mins ■ Choice of times ■ Unknown

Crematoria Allowing Removal of Coffin Lid During Service

2011



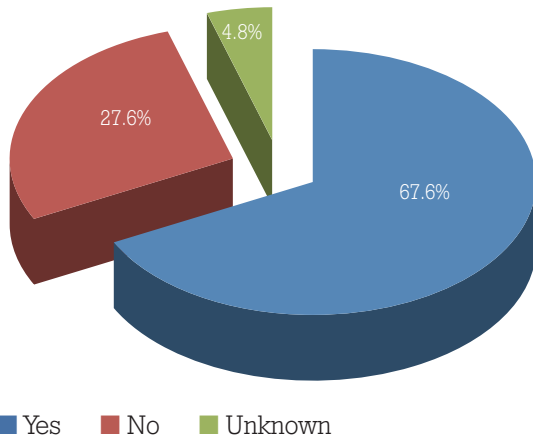
2016



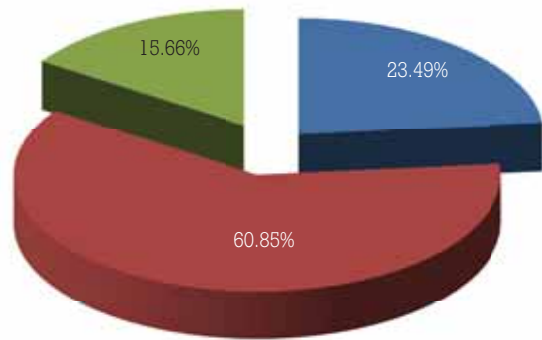
■ Yes ■ No ■ If requested ■ Not been requested ■ Not known

Crematoria Having Declined a Large Coffin

2007



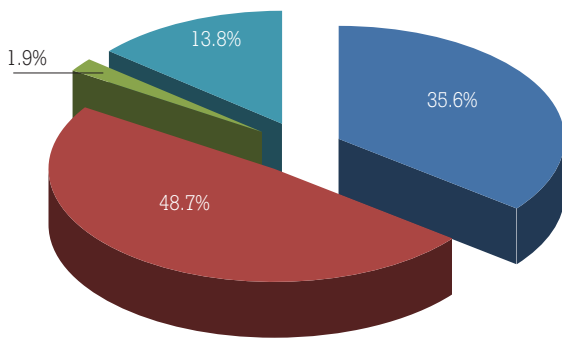
2016



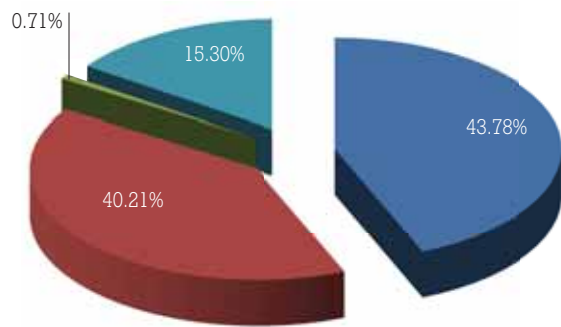
■ Yes ■ No ■ Unknown

Crematoria Holding Over Bodies

2011



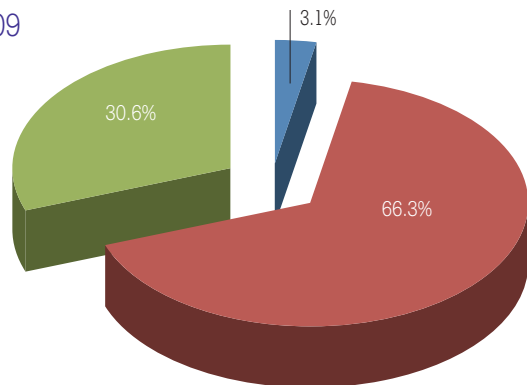
2016



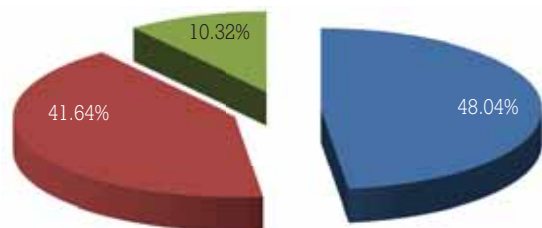
■ Yes ■ No ■ If required ■ Under discussion ■ Unknown

Cremators with Heat Exchangers

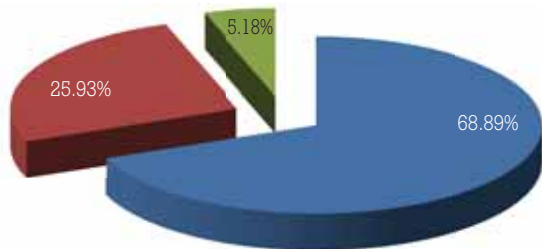
2009



2016 with heat exchangers



2015 with heat exchangers **IN USE**



■ Yes ■ No ■ Unknown